

Original article

Age, Period, and Cohort Effects on Mortality From Ischemic Heart Disease in Southern Spain

Ricardo Ocaña-Riola,^{a,b,*} José María Mayoral-Cortés,^c Alberto Fernández-Ajuria,^{a,b} Carmen Sánchez-Cantalejo,^{a,b} Piedad Martín-Olmedo,^{a,b} and Encarnación Blanco-Reina^d^a Escuela Andaluza de Salud Pública, Granada, Spain^b Instituto de Investigación Biosanitaria de Granada, Granada, Spain^c Servicio de Epidemiología y Salud Laboral, Consejería de Salud de la Junta de Andalucía, Seville, Spain^d Departamento de Farmacología, Facultad de Medicina, Universidad de Málaga, Málaga, Spain

Article history:

Received 17 May 2014

Accepted 11 July 2014

Available online 4 December 2014

Keywords:

Ischemic heart disease

Mortality

Age-period-cohort models

Poisson regression

Spline functions

Andalusia

ABSTRACT

Introduction and objectives: Ischemic heart disease is the leading cause of death and one of the top 4 causes of burden of disease worldwide. The aim of this study was to evaluate age-period-cohort effects on mortality from ischemic heart disease in Andalusia (southern Spain) and in each of its 8 provinces during the period 1981–2008.

Methods: A population-based ecological study was conducted. In all, 145 539 deaths from ischemic heart disease were analyzed for individuals aged between 30 and 84 years who died in Andalusia in the study period. A nonlinear regression model was estimated for each sex and geographical area using spline functions.

Results: There was an upward trend in male and female mortality rate by age from the age of 30 years. The risk of death for men and women showed a downward trend for cohorts born after 1920, decreasing after 1960 with a steep slope among men. Analysis of the period effect showed that male and female death risk first remained steady from 1981 to 1990 and then increased between 1990 and 2000, only to decrease again until 2008.

Conclusions: There were similar age-period-cohort effects on mortality in all the provinces of Andalusia and for Andalusia as a whole. If the observed cohort and period effects persist, male and female mortality from ischemic heart disease will continue to decline.

© 2014 Sociedad Española de Cardiología. Published by Elsevier España, S.L.U. All rights reserved.

Efectos de la edad, el periodo de defunción y la cohorte de nacimiento en la mortalidad por enfermedad isquémica del corazón en el sur de España

RESUMEN

Introducción y objetivos: La cardiopatía isquémica es la primera causa de muerte y una de las cuatro principales causas de carga de enfermedad en el mundo. El objetivo de este trabajo es evaluar los efectos edad-periodo-cohorte en la mortalidad por cardiopatía isquémica en Andalucía (sur de España) y en cada una de sus provincias durante el periodo 1981–2008.

Métodos: Se realizó un estudio ecológico poblacional. Se analizaron las 145.539 defunciones por cardiopatía isquémica ocurridas en Andalucía durante el periodo de estudio a edades comprendidas entre 30 y 84 años. Se estimó un modelo de regresión no lineal con funciones *spline* para cada sexo y área geográfica.

Resultados: En la tasa de mortalidad masculina y femenina a partir de 30 años de edad se observa tendencia a aumentar. El riesgo de muerte para varones y mujeres fue descendiente para las cohortes nacidas después de 1920 y con una pendiente más pronunciada después de 1960 entre los varones. El análisis del efecto periodo mostró que el riesgo de mortalidad masculina y femenina se mantuvo estable desde 1981 hasta 1990, aumentó entre 1990 y 2000 y volvió a disminuir desde 2000 hasta 2008.

Palabras clave:

Enfermedad isquémica del corazón

Mortalidad

Modelos edad-periodo-cohorte

Regresión de Poisson

Funciones *spline*

Andalucía

SEE RELATED ARTICLE:

<http://dx.doi.org/10.1016/j.rec.2014.12.013>, Rev Esp Cardiol. 2015;68:361–2.

* Corresponding author: Escuela Andaluza de Salud Pública, Campus Universitario de Cartuja, Cuesta del Observatorio 4, Apartado de Correos 2070, 18080 Granada, Spain.
E-mail address: ricardo.ocana.easp@juntadeandalucia.es (R. Ocaña-Riola).

<http://dx.doi.org/10.1016/j.rec.2014.07.024>

1885-5857/© 2014 Sociedad Española de Cardiología. Published by Elsevier España, S.L.U. All rights reserved.

Conclusiones: Los efectos edad-periodo-cohorte en la mortalidad fueron similares en todas las provincias de Andalucía y el conjunto de la comunidad autónoma. Si los efectos cohorte y periodo persisten, la mortalidad masculina y femenina por enfermedad isquémica cardiaca continuará disminuyendo.

© 2014 Sociedad Española de Cardiología. Publicado por Elsevier España, S.L.U. Todos los derechos reservados.

INTRODUCTION

Ischemic heart disease is the leading cause of death and is one of the top 4 causes of burden of disease worldwide. More than 7 millions deaths are produced annually, accounting for around 13% of all deaths.^{1,2} Additionally, ischemic heart disease is now responsible for 5.8% of years of life lost due to premature mortality.^{3–5}

Death rates from ischemic heart disease have diminished considerably over the last few decades in Europe and other continents in response to improvements in health promotion policies, health care, and treatments.^{6–8} As in other European Union countries, the trend in Spain is toward declining male and female mortality. The crude rate was 7.5 deaths per 10 000 population in 2011 (8.6 for men and 6.3 for women), making ischemic heart disease the first cause of death among men and the second among women.^{9,10} These figures mean that Spain is currently one of the European Union countries with the lowest mortality from ischemic

heart disease.⁸ However, as Spanish statistics tend to vary by region, proper health planning requires analysis of regional mortality patterns.¹¹

Andalusia (southern Spain) accounts for 18% of the Spanish population.^{9,12} It is the most highly populated autonomous community in Spain. Administratively it is divided into the 8 provinces of Almeria, Cadiz, Cordoba, Granada, Huelva, Jaen, Malaga, and Seville (Figure 1). According to the latest official figures, the crude death rate from ischemic heart disease in Andalusia was 7.9 per 10 000 population in 2011 (8.9 for males and 6.9 for females).^{10,13}

The Interactive Mortality Atlas for Andalusia was implemented in Andalusia for epidemiological surveillance purposes.¹⁴ Analyses of the annually updated Interactive Mortality Atlas for Andalusia data provide insights into the geographical distribution of mortality from ischemic heart disease over time in southern Spain. Recent studies based on these data show that currently, in over 95% of the Andalusian municipalities, male and female



Figure 1. Andalusia (southern Spain) and its administrative division into 8 provinces.

mortality rates for age groups under 65 years are similar to, or significantly lower than, the corresponding Spanish rates. Since 1981, however, male and female mortality rates for age groups older than 65 years have been significantly higher in the western Andalusia region. As is the case with other municipalities and other causes of death, the ischemic heart disease mortality rate ratio in age groups older than 65 years has generally been falling in this region since 2000, and the death rate is tending to gradually reduce the significant difference with the Spanish figure.^{15,16}

These results suggest a possible age-period-cohort effect on mortality from ischemic heart disease, with higher mortality observed compared with previous years, possibly because of certain features of past periods and generations that have gradually disappeared from the newer population cohorts.

Age-period-cohort analyses are typically performed using pooled time-period data and 5-year age groups. Because this approach to aggregation can result in significant bias in estimating trends, recent studies suggest that time-based analyses of mortality rates should minimize confusion between age, death period, and birth cohort by using data tabulated for periods as small as possible and by treating age, period and cohort as continuous variables.¹⁷ This would result in more accurate results, even though the complexity of the mathematical models used is greater.

The aim of this study was to evaluate the effect of birth cohort, adjusted by the year of death and age, on male and female deaths from ischemic heart disease in Andalusia as a whole and in each of its 8 provinces during the period 1981 to 2008, using continuous-time statistical models.

METHODS

Design

An ecological study was implemented with a Lexis diagram triangle comprising each annual age group, year of death, and year of birth as the unit of analysis.

Scope

The study was conducted in Andalusia as a whole and in each of its 8 provinces.

Population

In all, 145 539 deaths from ischemic heart disease (ICD-9 [ninth revision of the International Classification of Diseases] 410-414 and ICD-10 [tenth revision of the International Classification of Diseases] I20-I25), 90 387 in males and 55 152 in females, were analyzed for individuals between the ages of 30 and 84 years who died in Andalusia in the period 1981 to 2008. The deaths correspond, therefore, to cohorts born between 1896 and 1978.

Variables

Using information recorded for each death (the person's age, sex, year of birth, year of death, and province of residence), the number of male and female deaths in each province was compiled and grouped by 1-year age, year of death, and year of birth. The number of male and female inhabitants for each province was also recorded, grouped by 1-year age and year of death.

Information Sources

Mortality data were obtained from the Andalusian Institute of Statistics and Cartography, via the General Secretariat of Public

Health and Participation (*Secretaría General de Salud Pública y Participación*) attached to the Department of Health (*Consejería de Salud*) of the Autonomous Government of Andalusia (*Junta de Andalucía*). Population data were obtained from the Spanish National Institute of Statistics for the period 1981 to 2002 and from municipal registries for the period 2003 to 2008.

Statistical Analysis

A Lexis diagram tabulating deaths and person-years by age, period, and cohort was used for the statistical analysis of the data. Because age, period, and cohort are originally continuous variables, their impact on the death rate was analyzed in a continuous-time model, which allowed us to calculate the death rate at any point in the Lexis diagram.¹⁷ A nonlinear regression model was estimated for each sex and geographical area, with the mortality rate observed for each age, year of death, and birth cohort as the dependent variable. The formulation of the multiplicative age-period-cohort model for rate $r(a, p)$ at age a in period p for persons in birth cohort $c = p - a$ is:

$$\log(r(a, p)) = f(a) + g(p) + h(c)$$

This is a usual approach to modelling effects, where $f(a)$, $g(p)$ and $h(c)$ are respectively the age, period, and cohort functions. To obtain identifiability, $h(c)$ was restricted to be 0 for the reference cohort $c_0 = 1932$ (an intermediate point for the cohorts born between 1896 and 1978 that has been previously used in other age-period-cohort analyses in Andalusia), and $g(p)$ was constrained to be 0 on average and to have 0 slope on the logarithmic scale. Thus, $f(a)$ is interpretable as log age-specific rates in the reference cohort after adjustment for the period effect, $h(c)$ is the log relative risk relative to cohort c_0 , and $g(p)$ is the residual log relative risk, ie, log relative risk relative to the age-cohort prediction. Each term was parameterized using natural splines functions with 7 knots.^{17,18}

The linear trend (*drift*) was extracted from the model using the Holford method. This parameter represents the overall slope of the time trend due to both cohort and period.¹⁷

The analysis was implemented in R programming language using the *apc.fit* function from the *Epi* package.¹⁹ Separate analyses were performed for each sex, for each province and for Andalusia as a whole.

RESULTS

Results are described in terms of trend charts obtained for each age-period-cohort model. Each graph has 3 curves depicting, from left to right, trends in mortality rate by age for the reference cohort, mortality risk by birth cohort (taking 1932 as the reference), and mortality risk by year of death (taking the mortality average of the period as the reference). The horizontal axis of the graph is divided in 2 parts: 1 for age (years-old) and 1 for cohort-period (calendar years). The left vertical axis represents mortality rates for the age effect and the right vertical axis represents relative risk for the cohort and period effects. A dot has been placed at (1932, 1) to indicate the reference cohort.

Age Effect

There was an upward trend in male and female mortality by age for Andalusia as a whole from the age of 30 years (Figure 2). A similar trend was observed for all the provinces (Figures 3–4).

Birth Cohort Effect

In Andalusia, the risk of death for men and women remained steady for cohorts born between 1896 and 1920. From 1920, the male and female risk showed a downward trend, decreasing after 1960 with a steep slope among men (Figure 2).

The male and female mortality trends by birth cohort were similar for Andalusia as a whole as well as for each of its provinces, with the exception of Jaen and Malaga. These provinces experienced a steady increase in male and female mortality risk for cohorts born after 1960 (Figures 3-4). However, the small number of deaths from ischemic heart disease registered for the most recent cohorts and the width of the confidence intervals suggest that these were not statistically significant increases.

Period-of-death Effect

The death risk for men and women in Andalusia first remained steady from 1981 to 1990 and then increased between 1990 and 2000, only to decrease again until the end of the study period (Figure 2). This pattern was, moreover, replicated in each of the Andalusian provinces, with the exception of Jaen, Almeria, and Huelva. These provinces experienced a more oscillating mortality trend either for men or for women (Figures 3-4).

Overall, the estimated annual decrease in Andalusian mortality rates was -1.98% for men and -2.50% for women (Table). These linear changes were statistically significant for both male and female mortality. Similar results were observed for all the provinces of Andalusia. Cadiz was the province that showed the highest annual decrease in mortality rates for men (-2.67%) and women (-3.61%) (Table).

DISCUSSION

This study points to an age-period-cohort effect on mortality from ischemic heart disease that was similar in all the geographical areas studied.

Age Effect

The results showed a progressive increase in male and female death rates with age. These findings are in line with other studies performed around the world, which have also shown that men have a higher death rate than women at all ages, regardless of income or development levels.⁸

Age is one of the main nonmodifiable risk factors for ischemic heart disease. Moreover, aging is related to a higher probability of having high blood pressure, diabetes mellitus and hypercholesterolemia and of being inactive, as well as other modifiable risk factors.²⁰ Overall, hypertension and diabetes mellitus are 2 of the most important risk factors for ischemic heart disease in people of all ages and is the major risk factor in the elderly.^{4,21-23} In Spain and Andalusia, the prevalence of both hypertension and diabetes mellitus increased with age.²⁴⁻²⁶ The prevalence of hypertension is currently 72% among Spaniards older than 65 years, and the prevalence of diabetes mellitus is 29% among men and 24% among women.²⁷ These figures could explain the steady rise in the death rate with age found in this study and corroborates the findings of other Spanish studies.²⁸

Birth Cohort Effect

For Andalusia as a whole and for each of its provinces, the analysis of the cohort effect revealed a steady fall in the mortality risk from ischemic heart disease for all generations born after 1920. This finding has also been observed in previous Spanish and worldwide studies, suggesting that the continuous advances in medical technology and healthcare could explain the steady fall in the risk of mortality in developed countries.^{29,30} Indeed, Spain has undergone a remarkable social and economic transformation since the beginning of the 20th century, which has favored improvement in treatments and healthcare for ischemic heart disease and in health promotion for successive generations.^{31,32} In addition, the Mediterranean diet and the progressive improvements in nutrition of Spanish generations have led to cardiovascular benefits, which could have contributed to reducing the risk of death.^{33,34} In fact, Spain is now one of the European Union countries with the lowest mortality from ischemic heart disease.^{7,8}

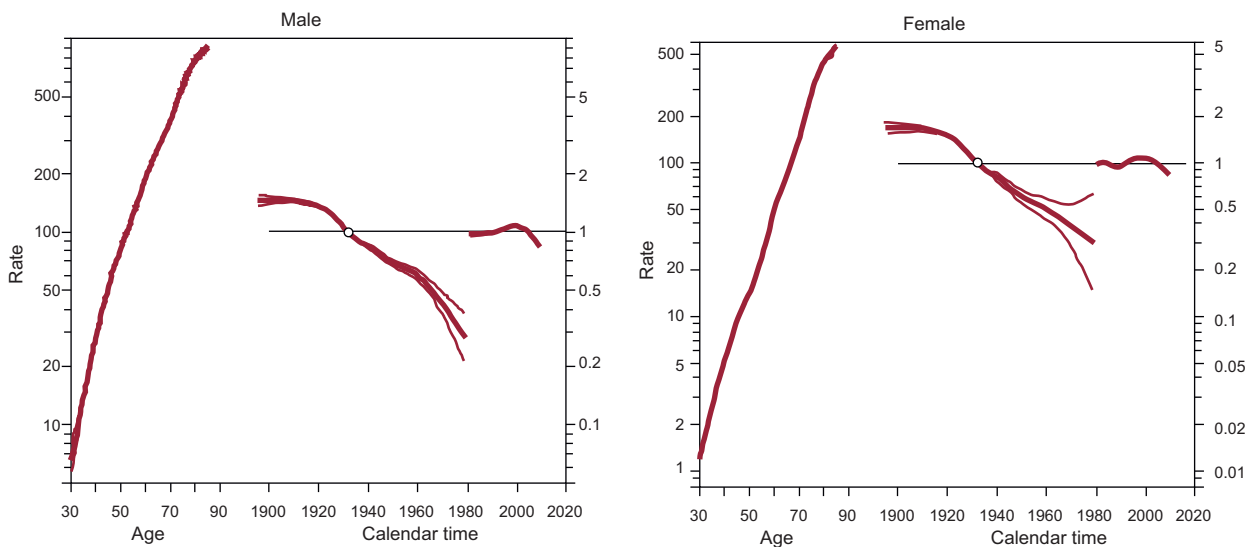


Figure 2. Age-period-cohort effects, with its corresponding confidence intervals, on mortality from ischemic heart disease in Andalusia as a whole. Each graph has 3 curves depicting, from left to right, death rates per 100 000 population by age for the reference cohort, relative risk of mortality by birth cohort and relative risk of mortality by calendar year.

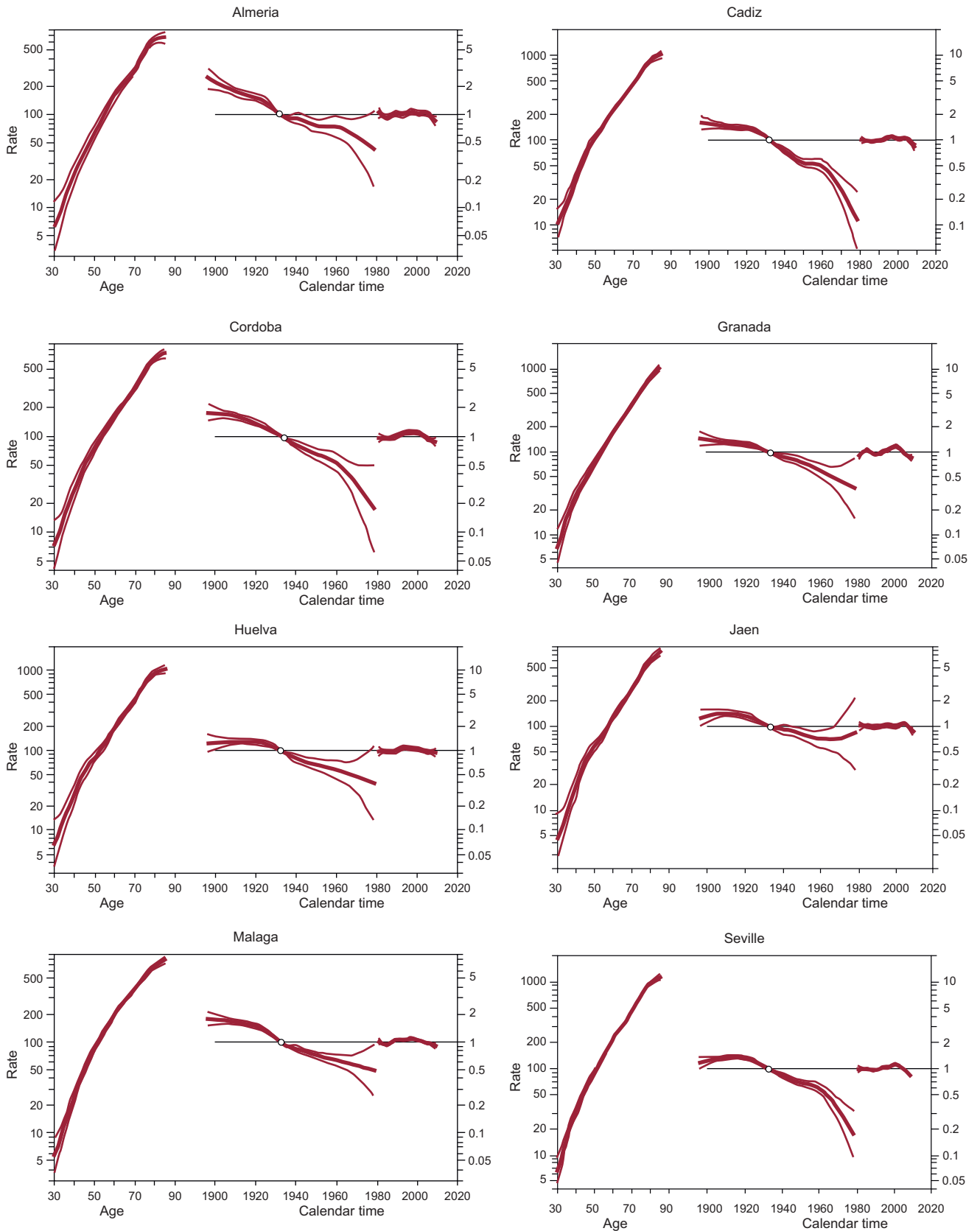


Figure 3. Age-period-cohort effects, with its corresponding confidence intervals, on male mortality from ischemic heart disease in the provinces of Andalusia. Each graph has 3 curves depicting, from left to right, death rates per 100 000 population by age for the reference cohort, relative risk of mortality by birth cohort and relative risk of mortality by calendar year.

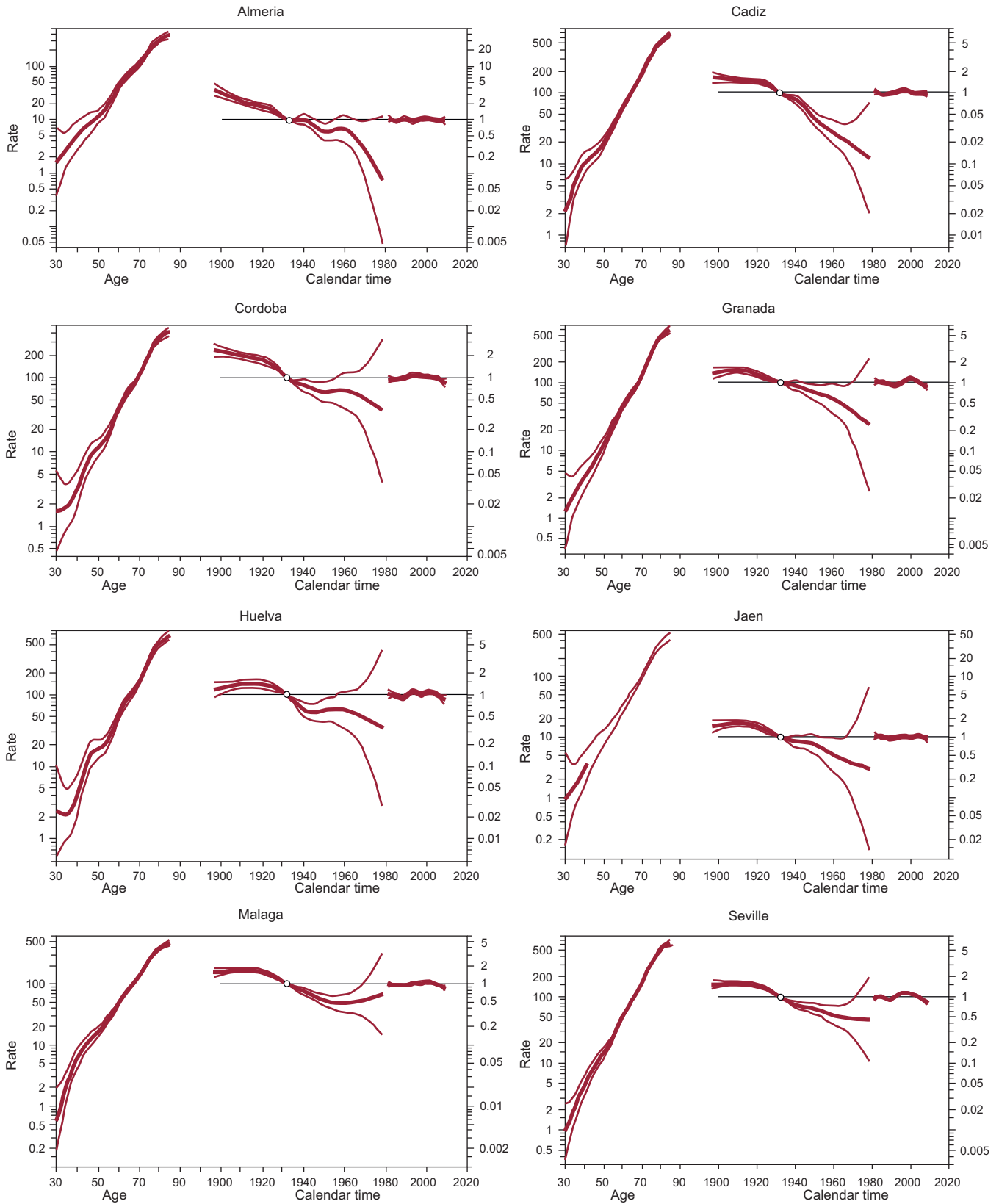


Figure 4. Age-period-cohort effects, with its corresponding confidence intervals, on female mortality from ischemic heart disease in the provinces of Andalusia. Each graph has 3 curves depicting, from left to right, death rates per 100 000 population by age for the reference cohort, relative risk of mortality by birth cohort and relative risk of mortality by calendar year.

Table
Annual Percent Change in Mortality Risk from Ischemic Heart Disease in Andalusia

	Male	Female
Almeria	-1.87 (-2.36 to -1.37)	-3.02 (-4.19 to -1.82)
Cadiz	-2.67 (-3.01 to -2.33)	-3.61 (-4.37 to -2.84)
Cordoba	-2.46 (-2.91 to -2.00)	-2.37 (-3.42 to -1.31)
Granada	-1.66 (-2.06 to 1.26)	-2.05 (-3.03 to -1.06)
Huelva	-1.78 (-2.30 to -1.27)	-1.98 (-3.16 to -0.78)
Jaen	-1.30 (-1.79 to -0.81)	-2.38 (-3.69 to -1.06)
Malaga	-1.98 (-2.28 to -1.67)	-2.44 (-3.12 to -1.74)
Seville	-2.00 (-2.28 to -1.73)	-2.19 (-2.85 to -1.53)
Andalusia	-1.98 (-2.11 to -1.84)	-2.50 (-2.81 to -2.18)

Linear trend (drift) of the percentages of variation, with the 95% confidence interval in parentheses.

Smoking is an important modifiable risk factor for ischemic heart disease. In Spain and Andalusia, the prevalence of tobacco consumption has progressively declined in males born after 1950. In contrast, the prevalence of daily tobacco consumption has increased steadily among women born after 1930, and especially for post-1960 generations.^{35,36} This could be related to the steeper slope of the risk of death for post-1960 male generations in Andalusia, which was not observed among women born after 1960.

Recent studies worldwide have found an effect of birth cohort on the prevalence of obesity, diabetes mellitus and other modifiable risk factors for ischemic heart disease, suggesting that cohort-specific strategies may be needed to combat the high prevalence of risk factors and to reduce their impact on mortality.^{37–41} Unfortunately, there are no similar studies in Andalusia that support this hypothesis. However, nutritional excesses in more recent Spanish generations have begun to fuel infant obesity and other health problems that could change the future trend in the risk of mortality from ischemic heart disease in Andalusia.⁴²

Period-of-death Effect

The period effect showed an oscillating mortality trend, which first remained steady from 1981 to 1990, then increased between 1990 and 2000, and finally decreased again until 2008.

Healthcare reform in Andalusia lasted into the 1990s, following Spanish Government devolution to Andalusia of the responsibility for healthcare. The increase of the death risk before this reform is compatible with the late effects of cumulative exposure to tobacco smoking, environmental and occupational exposures, lack of sufficient healthcare or efficient diagnostic procedures, and scarce preventive and therapeutic procedures during that period in Andalusia and in Spain as a whole.⁴³ In addition, there is evidence that the prevalence of obesity, hypertension, and hypercholesterolemia started to increase in adults in the 1990s.^{44–46} Because all of these factors are modifiable risk factors for ischemic heart disease, the upwards trends in the prevalence could be related to the increasing trend in the mortality risk during the last decade of the 20th century. Today, the prevalence of obesity continues to increase in Andalusia. For this reason, health promotion policies should be implemented to control the overweight epidemic and, as a result, to reduce the incidence of ischemic heart disease and associated mortality.²⁶

On analyzing the specific causes of death, it was seen that the International Classification of Diseases code changes implemented with ICD-10 in 1999 may have affected the mortality trends. These

changes, however, did not affect mortality from ischemic heart disease in Spain.^{47,48} Therefore, the explanation for the decline in trend for the period 2000–2008 must be related to other factors.

After the healthcare reform in Andalusia, health promotion and disease prevention measures were gradually introduced, as well as advances in medical technology.⁴⁹ Thus, the treatment of patients with high blood pressure changed from 5% in 1980 to 20% in 2002, and a similar increase was observed in the treatment of hypercholesterolemia.⁵⁰ In 1994, the Department of Health of the Autonomous Government of Andalusia created the EPES (*Empresa Pública de Emergencias Sanitarias*). The number of patients treated by this service increased progressively from 17 500 in 1995 to 60 000 in 2008, and the new therapies, such as prehospital fibrinolytic therapy, increased from 18% in 2000 to 30% in 2005. A clear reduction in intrahospital mortality was also reported for this period.^{51,52} In addition, heart rehabilitation units were widely implemented in 1997, contributing to improved quality of life and survival. This, together with the generalization of angioplasty after 1998, was related to a subsequent reduction in mortality from acute myocardial infarction.^{28,53,54} Around 2000, the Department of Health of the Autonomous Government of Andalusia started the I Health Care Quality Program, which has led to continuous quality improvement and the standardization of procedures based on clinical evidence for the effective management of cardiovascular events and other diseases. In 2005, the Comprehensive Care Plan for Heart Disease was implemented in Andalusia, with the aim of enhancing knowledge of heart disease and of promoting heart-healthy lifestyles.⁵⁵ All these actions, taken together, have increased the quality of healthcare provision and improved treatments, with a consequent increase in survival and reduction in deaths from ischemic heart disease, as has occurred in Spain as a whole during the first decade of the 21st century.^{11,49}

Recent studies have shown that half of the decrease in mortality from coronary heart disease in Spain is attributable to evidence-based therapies, and half to reductions in the main modifiable risk factors.⁴³ Since the end of the 1990s, the prevalence of high blood pressure, dyslipidemia, diabetes mellitus, and female smoking has increased in Andalusia, making it one of the Spanish regions with the highest prevalence of cardiovascular risk factors.^{26,27,44} However, the incidence of ischemic heart disease has remained relatively stable since 2000.²⁶ These findings suggest that the declining mortality for the period 2000–2008 may be principally due to improved health policies, treatment, and patient care. In addition, because the main reduction in risk factors is still to be produced, as a result of the Integrated Health Plans implemented by the Department of Health of the Autonomous Government of Andalusia in 2005, the decline of mortality may accelerate in the next few years.^{56,57}

CONCLUSIONS

Age-period-cohort effects on mortality from ischemic heart disease were similar in all the provinces of Andalusia and for Andalusia as a whole. The cohort effect showed a steady fall in the mortality risk for male and female generations born after 1920. The period effect revealed a reversal in male and female mortality trends, which decreases declines since 2000. These results could explain the higher mortality from ischemic heart disease observed in the past in the provinces of Cadiz, Huelva and Seville (western Andalusia region) for age groups older than 65 years, as well as the subsequent fall in mortality since the mid-1990s.¹⁵ In fact, in this study, Cadiz was the province with highest annual decrease in male and female mortality rates.

If the observed cohort and period effects persist, mortality from ischemic heart disease will continue to decline for males and

females. However, the steady increase in the main modifiable risk factors in Andalusia could change future mortality trends. For this reason, health promotion policies should continue to control the overweight epidemic and other relevant risk factors. In addition, the implementation of new treatments, as well as novel healthcare policies that improve the care of ischemic heart disease should be promoted.

CONFLICTS OF INTEREST

None declared.

REFERENCES

- Forouzanfar MH, Moran AE, Flaxman AD, Roth G, MensahGA, Ezzati M, et al. Assessing the global burden of ischemic heart disease, part 2: analytic methods and estimates of the global epidemiology of ischemic heart disease in 2010. *Glob Heart*. 2012;7:331-42.
- World Health Organization. Disease and injury regional mortality estimates for 2000-2011. Geneva: WHO; 2013 [cited 2013 Oct 18]. Available at: http://www.who.int/healthinfo/global_burden_disease/estimates_regional_2000_2011/en/
- World Health Organization. The global burden of disease. Geneva: WHO; 2008 [cited 2014 Jul 10]. Available at: http://www.who.int/healthinfo/global_burden_disease/GBD_report_2004update_full.pdf?ua=1
- Palomeras-Soler E, Casado-Ruiz V. Epidemiology and risk factors of cerebral ischemia and ischemic heart diseases: similarities and differences. *Curr Cardiol Rev*. 2010;6:138-49.
- Moran AE, Oliver JT, Mirzaie M, Forouzanfar MH, Chilov M, Anderson L, et al. Assessing the global burden of ischemic heart diseases: Part 1: Methods for a systematic review of the global epidemiology of ischemic heart disease in 1990 and 2010. *Glob Heart*. 2012;7:315-29.
- Amiri M, Janssen F, Kunst AE. The decline in ischemic heart disease mortality in seven European countries: exploration of future trends. *J Epidemiol Community Health*. 2011;65:676-81.
- Lozano R, Naghavi M, Foreman K, Lim S, Shibuya K, Aboyans V, et al. Global and regional mortality from 235 causes of death for 20 age groups in 1990 and 2010: a systematic analysis for the Global Burden of Disease Study 2010. *Lancet*. 2012;380:2095-128.
- Finegold JA, Asaria P, Francis DP. Mortality from ischemic heart disease by country, region, and age: statistics from World Health Organisation and United Nations. *Int J Cardiol*. 2013;168:934-45.
- Instituto Nacional de Estadística. España en cifras, 2013. Madrid: INE; 2013 [cited 2014 Jul 10]. Available at: http://www.ine.es/ss/Satellite?param=PYSDetalleGratuitas&c=INEPublicacion_C&p=1254735110672&pagename=ProductosYServicios%2FPYSLayout&cid=1259926334812&L=0
- Instituto Nacional de Estadística. Defunciones según la causa de muerte: año 2011. Madrid: INE; 2013 [cited 2014 Jul 10]. Available at: <http://ine.es/jaxi/menu.do?type=pcaxis&path=/t15/p417/&file=inebase>
- Regidor E, Gutiérrez-Fisac JL, Alfaro M. Indicadores de Salud 2009. Evolución de los indicadores del estado de salud en España y su magnitud en el contexto de la Unión Europea. Madrid: Ministerio de Sanidad y Política Social; 2009 [cited 2014 Jul 10]. Available at: <http://www.mssi.gob.es/en/estadEstudios/estadisticas/inforRecopilaciones/indicadoresSalud.htm>
- Instituto de Estadística y Cartografía de Andalucía. Andalucía estadística y geográfica: La población andaluza. Seville: IECA; 2011 [cited 2014 Jul 10]. Available at: <http://www.ieca.junta-andalucia.es/institutodeestadisticaycartografia/estadisticaygeografica/index.htm>
- Instituto de Salud Carlos III. Raziel: Mortalidad por todas las causas. Madrid: ISCIII; 2014 [cited 2014 Jul 10]. Available at: <http://193.146.50.130/raziel/grafs/ftend.php>
- Ocaña-Riola R, Mayoral-Cortés JM, Sánchez-Cantalejo C, Toro-Cárdenas S, Fernández-Ajuria A, Méndez-Martínez C. Atlas interactivo de mortalidad en Andalucía (AIMA). *Rev Esp Salud Pública*. 2008;82:379-94.
- Ocaña-Riola R, editor. Atlas Interactivo de Mortalidad en Andalucía: AIMA, 1981-2006. Granada: EASP; 2010.
- Ocaña-Riola R, Mayoral-Cortés JM. Spatio-temporal trends of mortality in small areas of Southern Spain. *BMC Public Health*. 2010;10:26.
- Carstensen B. Age-period-cohort models for the Lexis diagram. *Stat Med*. 2007;26:3018-45.
- Holford TR. Approaches to fitting age-period-cohort models with unequal intervals. *Stat Med*. 2006;25:977-93.
- Carstensen B, Plummer M, Hills M, Laara E. Epi: a package for statistical analysis in epidemiology (version 1.1.40) [cited 2013 Sep 26]. Available at: <http://cran.r-project.org/web/packages/Epi>
- Jankowski P, Czarnecka D, Wolfshaut-Wolak R, Lysek R, Lukaszewska A, Surowiec S, et al. Age, sex, and secondary prevention of ischemic heart disease in everyday practice. *Kardiol Pol*. 2013;71:1251-9.
- Kannel WB, Gordon T. Evaluation of cardiovascular risk in the elderly: the Framingham study. *Bull N Y Acad Med*. 1978;54:573-91.
- Mostafaei N, Huber KR, Sebesta C, Krampla W, Jungwirth S, Zehetmayer S, et al. Risk factors for cerebrovascular and cardiovascular diseases beyond age 75 years. *J Neural Transm*. 2010;117:1247-52.
- Wild S, Roglic G, Green A, Sicree R, King H. Global prevalence of diabetes: estimates for the year 2000 and projections for 2030. *Diabetes Care*. 2004;27:1047-53.
- Banegas Banegas JR. Epidemiología de la hipertensión arterial en España. Situación actual y perspectivas. *Hipertension*. 2005;22:353-62.
- Instituto Nacional de Estadística. Encuesta Nacional de Salud 2011-2012. Madrid: INE; 2013 [cited 2014 Jul 10]. Available at: <https://www.mssi.gob.es/estadEstudios/estadisticas/encuestaNacional/encuesta2011.htm>
- Gavira L, Carmona G, editors. Resultados y calidad del Sistema Sanitario Público de Andalucía: Edición 2012. Granada: EASP; 2012. p. 1-271.
- Grau M, Elosua R, Cabrera de León A, Guebbe MJ, Baena-Díez JM, Vega Alonso T, et al. Factores de riesgo cardiovascular en España en la primera década del siglo XXI: análisis agrupado con datos individuales de 11 estudios de base poblacional, estudio DARIOS. *Rev Esp Cardiol*. 2011;64:295-304.
- Marrugat J, Elosua R, Martí H. Epidemiología de la cardiopatía isquémica en España: estimación del número de casos y de las tendencias entre 1997 y 2005. *Rev Esp Cardiol*. 2002;55:337-46.
- Cirera Suárez LI, Rodríguez Barranco M, Chirilaque López MD, Tormo Díaz MJ, García Fulgueiras A, Navarro Sánchez C. Tendencias regionales de las causas de muerte en Murcia, 1975-2002. Efecto de la edad, el periodo de muerte y la cohorte de nacimiento. Murcia: Consejería de Sanidad; 2006.
- Lee HA, Park H. Trends in ischemic heart disease mortality in Korea, 1985-2009: An age-period-cohort analysis. *J Prev Med Public Health*. 2012;45:323-8.
- Harrison J, Corkill D. Spain: a modern European economy. Hampshire: Ashgate; 2004.
- Castro Beiras A, coordinator. Estrategia en cardiopatía isquémica del Sistema Nacional de Salud. Madrid: Ministerio de Sanidad, Política Social e Igualdad; 2011.
- Cussó Segura X, Garrabou Segura R. La transición nutricional en la España contemporánea: las variaciones en el consumo de pan, patatas y legumbres (1850-2000). *Investigaciones de Historia Económica*. 2007;7:69-100.
- Dégano IR, Elosua R, Kaski JC, Fernández-Bergés DJ, Grau M, Marrugat J. Estabilidad de la placa aterosclerótica y la paradoja del sur de Europa. *Rev Esp Cardiol*. 2013;66:56-62.
- Fernandez E, Schiaffino A, Borrás JM, Shafey O, Villalbí JR, La Vecchia C. Prevalence of cigarette smoking by birth cohort among males and females in Spain, 1910-1990. *Eur J Cancer Prev*. 2003;12:57-62.
- Fundación Pública Andaluza para la Atención a las Drogodependencias e Incorporación Social (FADAIS). La población joven andaluza ante las drogas 2009. Seville: Dirección General de Servicios Sociales y Atención a las Drogodependencias de Andalucía; 2009 [cited 2014 Jul 10]. Available at: http://www.google.es/url?sa=t&rc=tj&q=&esrc=s&source=web&cd=2&cad=rja&uact=8&ved=0CCcQFjAB&url=http%3A%2F%2Fwww.juntadeandalucia.es%2Fexport%2Fdrupaljda%2FDrogodependencia_archivos_La_Pobl_Joven_ante_Ias_Drogas_2009.pdf&ei=k8q_U4LLD6X80QXF54G4CQ&usq=AFQjCNEV6HMLRUd84kxZHQt-K-3qtjivg&bv=70810081.d.d2k
- Jaacks LM, Gordon-Larsen P, Mayer-Davis EJ, Adair LS, Popkin B. Age, period and cohort effects on adult body mass index and overweight from 1991 to 2009 in China: the China Health and Nutrition Survey. *Int J Epidemiol*. 2013;42:828-37.
- Diouf I, Charles MA, Ducimetière P, Basdevant A, Eschwege E, Heude B. Evolution of obesity prevalence in France: an age-period-cohort analysis. *Epidemiology*. 2010;21:360-5.
- Reither EN, Hauser RM, Yang Y. Do birth cohorts matter? Age-period-cohort analyses of the obesity epidemic in the United States *Soc Sci Med*. 2009;69:1439-48.
- Kwon JW, Song YM, Park Hs, Sung J, Kim H, Cho SI. Effects of age, time period, and birth cohort on the prevalence of diabetes and obesity in Korean men. *Diabetes Care*. 2008;31:255-60.
- Allman-Farinelli MA, Chey T, Bauman AE, Gill T, James WP. Age, period and birth cohort effects on prevalence of overweight and obesity in Australian adults from 1990 to 2000. *Eur J Clin Nutr*. 2008;62:898-907.
- Valdés-Pizarro J, Royo-Bordonada MA. Prevalence of childhood obesity in Spain: National Health Survey 2006-2007. *Nutr Hosp*. 2012;27:154-60.
- Flores-Mateo G, Grau M, O'Flaherty M, Ramos R, Elosua R, Violan-Fors C, et al. Análisis de la disminución de la mortalidad por enfermedad coronaria en una población mediterránea: España 1988-2005. *Rev Esp Cardiol*. 2011;64:988-96.
- Sánchez Cruz JJ, Sánchez Villegas P, Moya Garrido MN, Mayoral Cortés JM. La salud en Andalucía según las Encuestas Andaluzas de Salud (EAS): EAS-1999, EAS-2003 y EAS-2007. Granada: EASP; 2010.
- Basterra-Gortari FJ, Bes-Rastrollo M, Seguí-Gómez M, Forga L, Martínez JA, Martínez-González MA. Tendencias de la obesidad, diabetes mellitus, hipertensión e hipercolesterolemia en España (1997-2003). *Med Clin (Barc)*. 2007;129:405-8.
- Salcedo V, Gutiérrez-Fisac JL, Guallar-Castillón P, Rodríguez-Artalejo F. Trends in overweight and misperceived overweight in Spain from 1987 to 2007. *Int J Obes (Lond)*. 2010;34:1759-65.
- Cano-Serral G, Perez G, Borrell C; COMPARA Group. Comparability between ICD-9 and ICD-10 for the leading causes of death in Spain. *Rev Epidemiol Sante Publique*. 2006;54:355-65.
- Salmerón D, Cirera L, Saez M, Navarro C. Influence of the introduction of the ICD-10 on tendencies of mortality by causes (1980-2004). *Gac Sanit*. 2009;23:144-6.

49. García-Armesto S, Abadía-Taira MB, Durán A, Hernández-Quevedo C, Bernal-Delgado E. Spain. Health system review. *Health Syst Transit*. 2010;12:1–295.
50. Molina Díaz R, García Matarín L, coordinators. Manual de hipertensión arterial en la práctica clínica de atención primaria. Granada: Sociedad Andaluza de Medicina de Familia; 2006.
51. Annual Report 2012. Sevilla: EPES; 2012 [cited 2014 Jul 2014]. Available at: http://www.epes.es/cocoon/epes-listado-.html?language=en&omh=%2FmenuHorizontalEn%2Fpublicacions%2F&omv=&omvh=&omvh02=&num_res=5&pagina=1&l=%2FmenuHorizontalEn%2Fpublicacions%2F&f=reports%2F&filtrar=Leak
52. Ruiz del Fresno L, García-Alcántara A, Hernández-Bayo A. Epidemiología del síndrome coronario agudo con elevación del segmento ST en Andalucía. *CardiCore*. 2011;46:45–8.
53. Sala J, Marrugat J, Masià R, Porta M. Improvement in survival after myocardial infarction between 1978–85 and 1986–88 in the REGICOR study. (Registre Glroní del COR) registry. *Eur Heart J*. 1995;16:779–84.
54. Gil M, Marrugat J, Sala J, Masià R, Elosua R, Albert X; the REGICOR investigators. Relationship of therapeutic improvements and 28-day case fatality in patients hospitalized with acute myocardial infarction between 1978 and 1993 in the REGICOR study. *Circulation*. 1999;99:1767–73.
55. Plan Integral de Atención a las Cardiopatías de Andalucía 2005–2009. Sevilla: Consejería de Salud; 2005 [citado 10 Jul 2014]. Available at: http://www.csalud.junta-andalucia.es/salud/channels/temas/temas_es/P_2_ANDALUCIA_EN_SALUD_PLANES_Y ESTRATEGIAS/plan_cardiopatias/plan_cardiopatias?perfil=org&desplegar=/temas_es/P_2_ANDALUCIA_EN_SALUD_PLANES_Y ESTRATEGIAS/&idioma=es&tema=/temas_es/P_2_ANDALUCIA_EN_SALUD_PLANES_Y ESTRATEGIAS/plan_cardiopatias/&contenido=/channels/temas/temas_es/P_2_ANDALUCIA_EN_SALUD_PLANES_Y ESTRATEGIAS/plan_cardiopatias/plan_cardiopatias
56. Agüero F, Dégano IR, Subirana I, Grau M, Zamora A, Sala J, et al. Impact of a partial smoke-free legislation on myocardial infarction incidence, mortality and case-fatality in a population-based registry: the REGICOR Study. *PLoS One*. 2013;8:e53722.
57. García-González JM. Contribuciones de la mortalidad cardiovascular a la esperanza de vida de la población española de 1980 a 2009. *Rev Esp Cardiol*. 2013;66:848–53.